



Tobit2Exchange

Professional application for the simple, fast and reliable Data Export from Tobit Server to various target formats.

Inhaltsübersicht

1. INTRODUCTION	3
2. SYSTEM REQUIREMENTS	4
3. INSTALLATION	5
3.1 Tobit Info Center.....	5
3.2 MS Outlook	6
3.3 Tobit2Exchange – setup.....	6
4. CREATE MIGRATION USERS IN TOBIT AND EXCHANGE	7
4.1 Tobit permissions	7
4.2 Exchange- Permissions.....	8
4.3 Use of different domains.....	9
4.4 Prepare the target system (Outlook / PST, Outlook / Exchange)	10
5. TOBIT2EXCHANGE.....	12
5.1 Running Tobit2Exchange	13
5.2 Tobit Server login.....	16
5.3 Outlook / Exchange login.....	16
5.4 Setting the users mapping	17
5.5 How to migrate global folders.....	18
5.6 Electronic journal.....	19
6. ADDITIONAL INFORMATION	20
6.1 Contact.....	20
6.2 Rechtliche Hinweise.....	20
6.3 Markennamen.....	21

1. Introduction

In the past, a large number of users have opted for the use of Tobit David Servers. By transformations (as corporate mergers, location changes, users preferences) a change of the e-mail server could be required. One of the main difficulties in that kind of changes is the data migration.

Over the years addresses, tasks, mails, fax, and voice messages are being managed by Tobit. These information have to be available also in new system areas. Apart from this requirement, at the end of 2003 we have developed the migration program Tobit2Exchange. Until the end of 2011, more than 1500 users have successfully transferred their data from Tobit into several target formats.

Tobit2Exchange was retained both for small data acquisitions with Outlook PST files and more extensive server migration with more than 1000 users.

Tobit2Exchange is the professional application for a simple, fast and reliable data export from Tobit servers to various target formats.

Features:

- simple, fast and reliable data export from Tobit servers to various target formats;
- individual choice on the migration scope;
- reduction of manual interventions. David users can be transferred individually or on Batch mode.
- suitable for both the migration of individual Tobit servers, and for bigger systems that frequently use Tobit migrations.
- unlimited use of the program
- detailed logging of scheduled activities. Thereby the migration can be exactly reconstructed.
- respect of the peculiarities of certain David versions.
- also old Tobit (until 6.6 SP5a version) versions can be supported.

The following description will help you in the transferring of your data in the new system without problems and in a secure way.

2. System requirements

In the field of migrations, Tobit2 Exchange could be installed on a workstation, which disposes of a connection to the transferring Tobit server and also to MS Exchange, in case of a direct migration this server.

Tobit2Exchange is a Windows application with a graphic interface and database support. It comes with an integrated database which is used for the logging, status changes and for the mapping of users' name.

Tobit Server

Tobit Server has to fulfil the following conditions:

- 6.6 SP5a
- Home
- SL
- XL
- V8/V8 +
- V8.5
- V10
- Fx

It's not important that the Tobit server operates in MS Windows, Novell Netware or Linux.

Exchange Server

Provided that the migration should be made directly to the following versions of MS Exchange, it supports the following versions:

- Exchange 2003
- Exchange 2007
- Exchange 2010

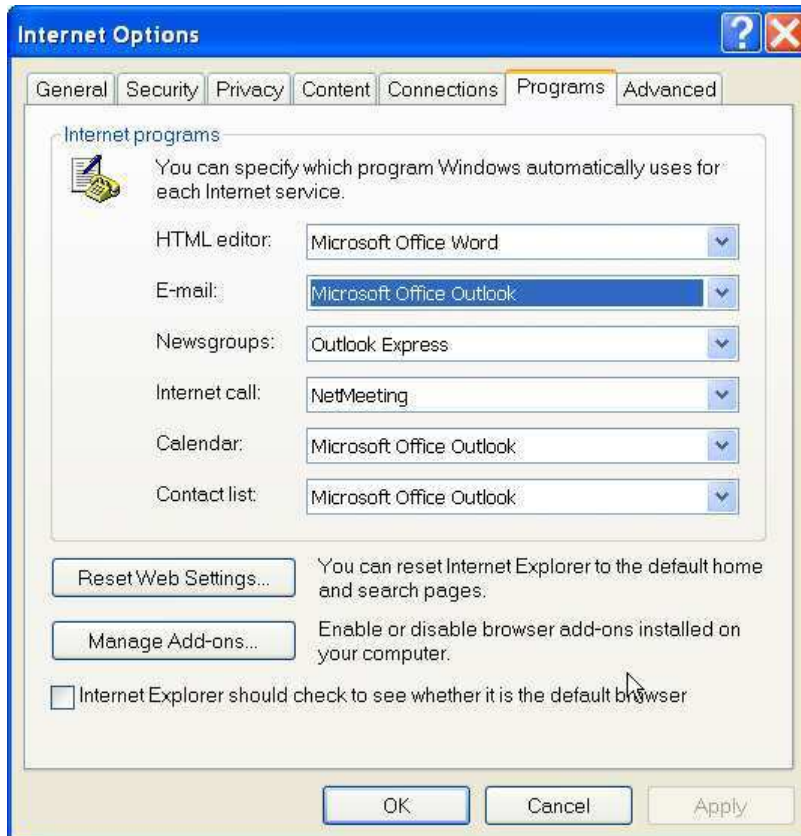
Tobit2 Exchange Client

Tobit2 Exchange can be used on the following Windows systems:

- Windows XP
- Windows Vista
- Windows 7

The workstation must have installed a matching version of TobitInfoCenter and Microsoft Outlook 2003 or later. Please ensure that MS Outlook is being set as the default mail client.

You can check on MS Internet Explorer which Mail program is generally used. (Extras, Internet options, programs).



3. Installation

3.1 Tobit Info Center

On the migration client it's required to have a running version of TobitInfoCenter.

Normally you can install this version directly from the Tobit server. Therefore you should use the administrator or set up a special user with administration privileges first.

Please ensure that the migration / administration user has an own mailbox within the Tobit system.

3.2 ***MS Outlook***

The migrating client must have installed a supported version (2003 or later) of Microsoft Outlook. You should install MS Outlook completely with all included options.

3.3 ***Tobit2Exchange – setup***

Please download the latest Tobit2Exchange version from our website.

Having the version you should extract the ZIP file and start the setup (setup.exe).

After the installation you will find the Tobit2Exchange icon on your desktop and the program is ready to be used.

As a registered user you will receive a license file (license.txt), that you need to copy on the Tobit2Exchange program directory (the default location is "C:/Programme/NetProof GmbH/tobit2exchange").

4. Create migration users in Tobit and Exchange

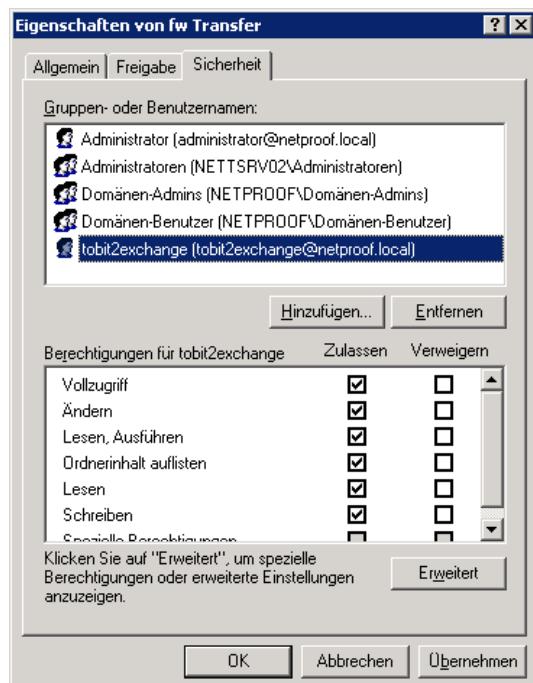
The vast majority of support requests have to do with problems about the assignment of user permissions. The migration can be performed without problems if the user who performed the migration has sufficient access rights.

It is recommendable that the three systems (Tobit2Exchange workstation, Tobit Server and Exchange server) are inside the same domain. For the migration you will need the administrator user or you can create a new user (ex. "tobit2exchange"), that will be added to the Administrator group, on your Active Directory.

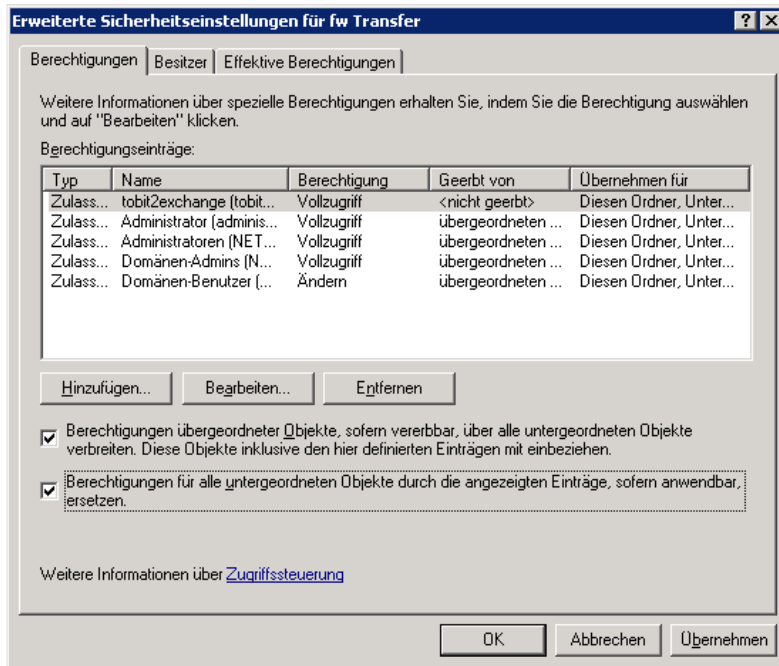
4.1 Tobit permissions

Log in on the Tobit server as an Administrator switch to the David program folder, e.g. "C:/David/".

Please click with your right mouse button on "C:/David/Archive" and on Properties. Choose among security settings.



Add the user "tobit2exchange" with full control and click on "Advanced". Here you specify that subordinate folders and files inherit the authority.



4.2 Exchange- Permissions

Grant full permission to all mailboxes to the user to be migrated (ex. "tobit2exchange") on the Exchange server. With Exchange 2007/2010 you can achieve this result by entering the following command on your Exchange Power Shell.

```
Add-ADPermission-Identity "DBName" user "User Name" - ExtendedRights Receive-As
```

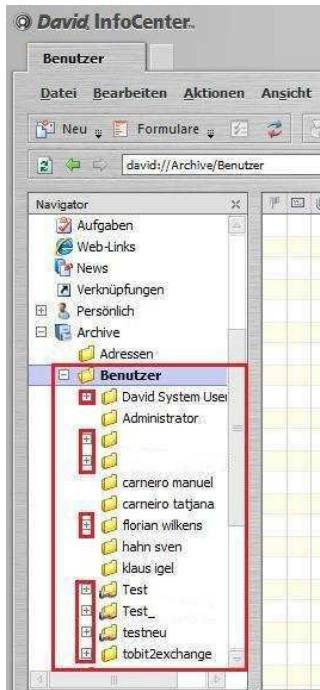
For the DBName, please put your database name (default for user "mailboxdatabase" and for public folder "public folder database").

Please enter the migrated user as user name (ex "tobit2exchange"). This ensures that the user has full access to the database. This is necessary even when using Tobit2Exchange.

Tobit2Exchange Manual - Version 2.x

Now, log in on the workstation with the user tobit2exchange to start the TobitInfoCenter. After the assignment of rights the log in is completed you should see a + sign before each user in the Info center

If that's not the case, please repeat the assignment of permissions directly on the user folder.



4.3 Use of different domains

If the server is located in another domain, the migration user has to be set up in both domains. Basically, the migration computer should be located in the Exchange domain. To avoid registration problems, it is advisable to map the network drives to the server in another domain.

4.4 Prepare the target system (Outlook / PST, Outlook / Exchange)

Target system: Outlook / PST

First you have to start Outlook and create a new profile on the “Control Panel -> Mail”.

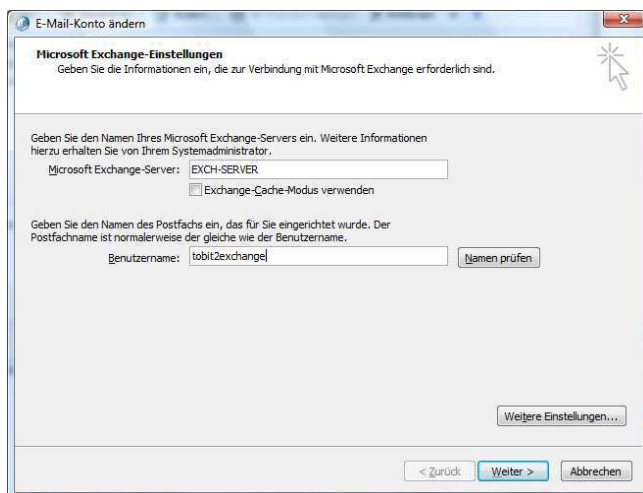
1. Please enter a new profile name and click on “OK”, ex. Tobit2exchange.
2. Select that you don't want to create an e-mail account or a directory and click on Cancel /Close.
3. Confirm that you want to create a profile without an account.
4. Specify this profile as default so Outlook starts with that profile.
5. Start MS Outlook.
6. You will be prompted again to create an e-mail account. Click “No” or “Without e-mail support” to continue.

After you exit Outlook, the data can be transferred into PST files.

Target system: Outlook / Exchange

First you have to start Outlook and create a new profile on the “Control Panel -> Mail”.

1. Please enter a new profile name and click on “OK”, ex. Tobit2exchange.
2. Please select that you want to add a new account and click on “Next”.
3. Select the Microsoft Exchange server and then click “Next”.
4. Enter the name of the Exchange server.
5. **Important:** Disable the option “Exchange Cache-Mode use”.
6. Enter the user name (ex tobit2exchange) and click on “Next” and “Finish”.

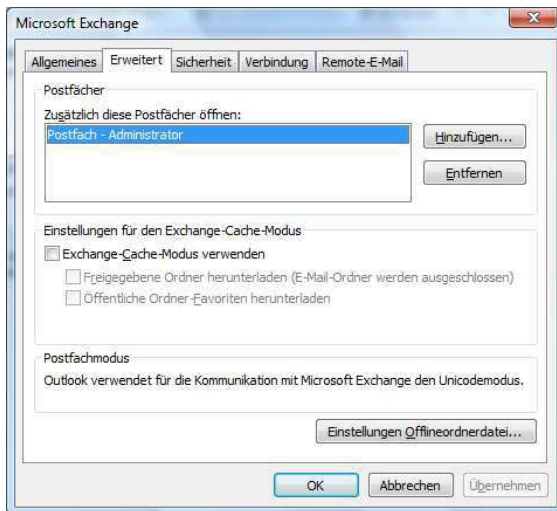


Tobit2Exchange Manual - Version 2.x

It is recommended to verify the permission to add mailboxes in Outlook and whether you can create and delete mailboxes in this new folder.

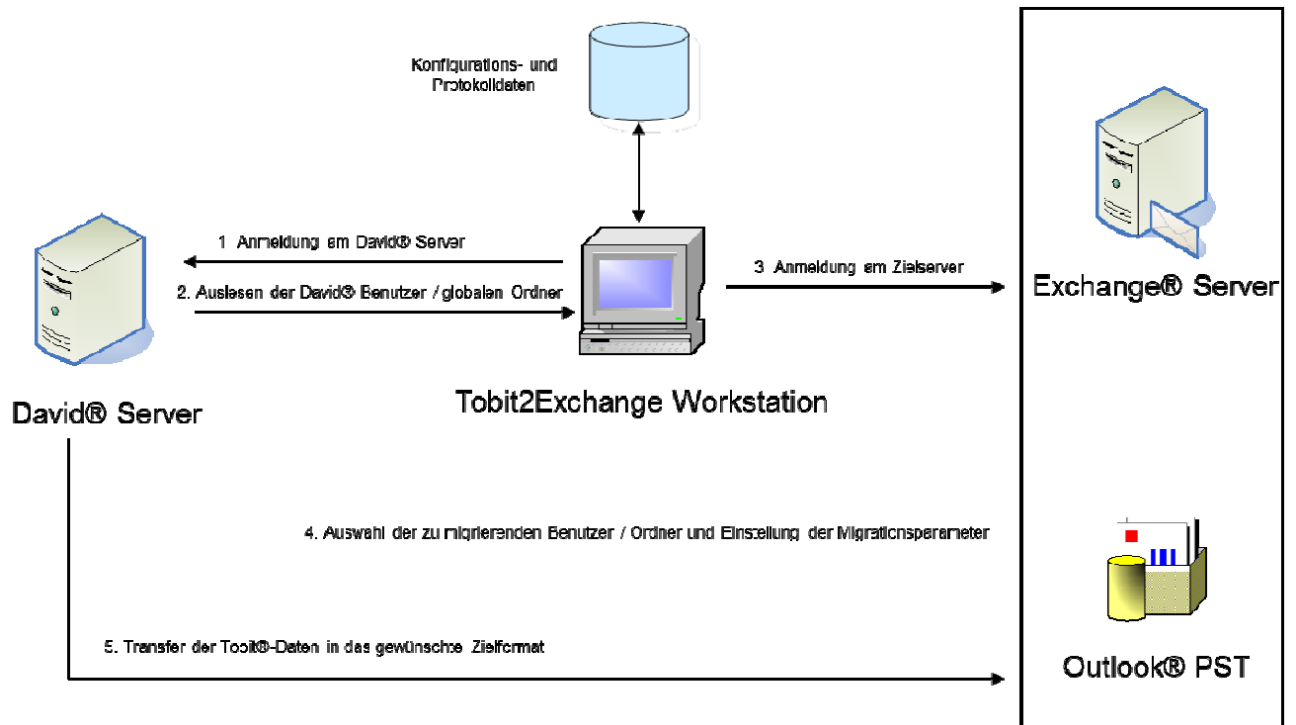
Click on “more settings” in this dialog.

In the following dialog you can add or remove mailboxes by clicking tab “Advanced”.



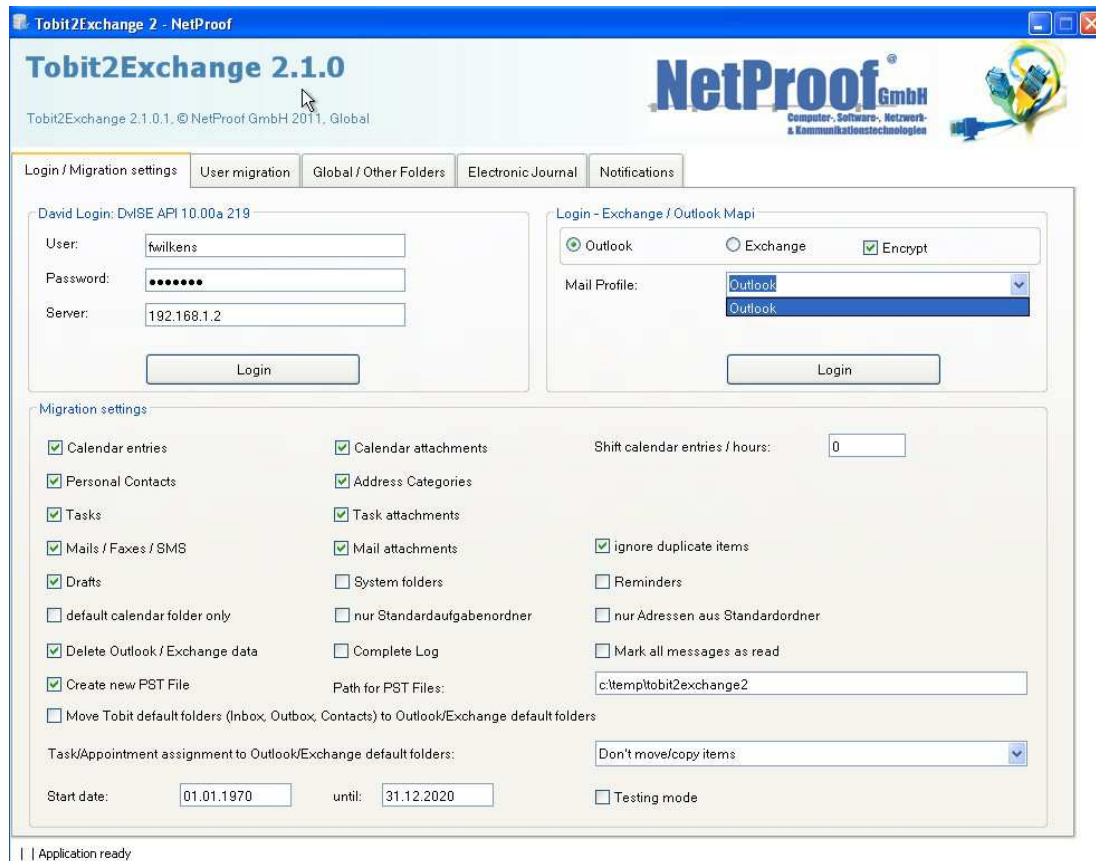
5. Tobit2Exchange

The following image illustrates the migration process and its components:



5.1 Running Tobit2Exchange

After starting Tobit2Exchange you will see the following screen.



In the following text you will find some additional information about the settings in this screen.

Detailed logging

By selecting this option each data record will be written into the log file. If this option is deselected you will see a summary for each folders and warnings/errors. As a default setting you can start with the non detailed logging.

System folder

Specifies whether system folders should be transferred. In Tobit you can find a system folder for each user, ex. drafts and trash included.

Delete data in OL/Exchange

Supposed you have already some data within the target mailbox (e.g. from a previous migration) this option allows you to start the migration with a clean mailbox. If you have specified that you use **only in the folder** “**Tobit2Exchange**” then this setting deletes only data within this namespace.

Otherwise, if you choose the option “move to default location”, the delete process effects also standard folders in Outlook/Exchange like INBOX, SENT etc.

Shift calendar entries

This settings allows you to correct time differences between Tobit and Exchange/Outlook.

Moving Tobit default folder in Outlook/Exchange default folders

If this feature is enabled, the standard Tobit folders like inbox, outbox and so on will go into the standard OL/Exchange folders. Any other folders will be created in the migration folder “tobit2Exchange” to avoid any naming conflicts with existing data.

Appointment and task assignment in Outlook / Exchange default folders

“Move or copy from default folders”

With this function, all tasks and appointments from **Tobit default folders** will be moved or copied into Outlook /Exchange default folders. E-mails and other item types are not affected from this setting.

“Move or copy from all folders

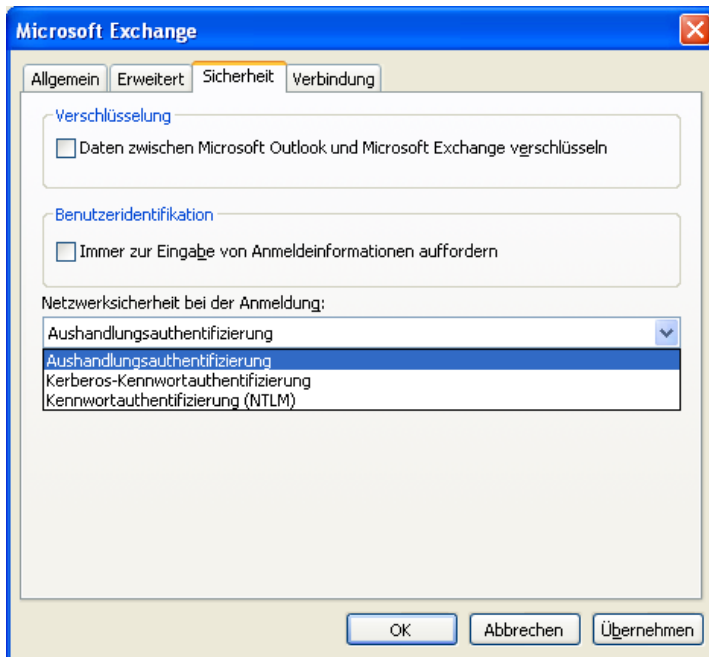
With this function, all tasks and appointments from all Tobit folders containing these item types will be moved or copied into Outlook /Exchange default folders. E-mails and other item types are not affected from this setting.

Migration start date / until date

Allows you to migrate date for the specified time frame.

Encrypted login into Outlook / Exchange

Use this option if the Exchange connection is encrypted.



Test mode

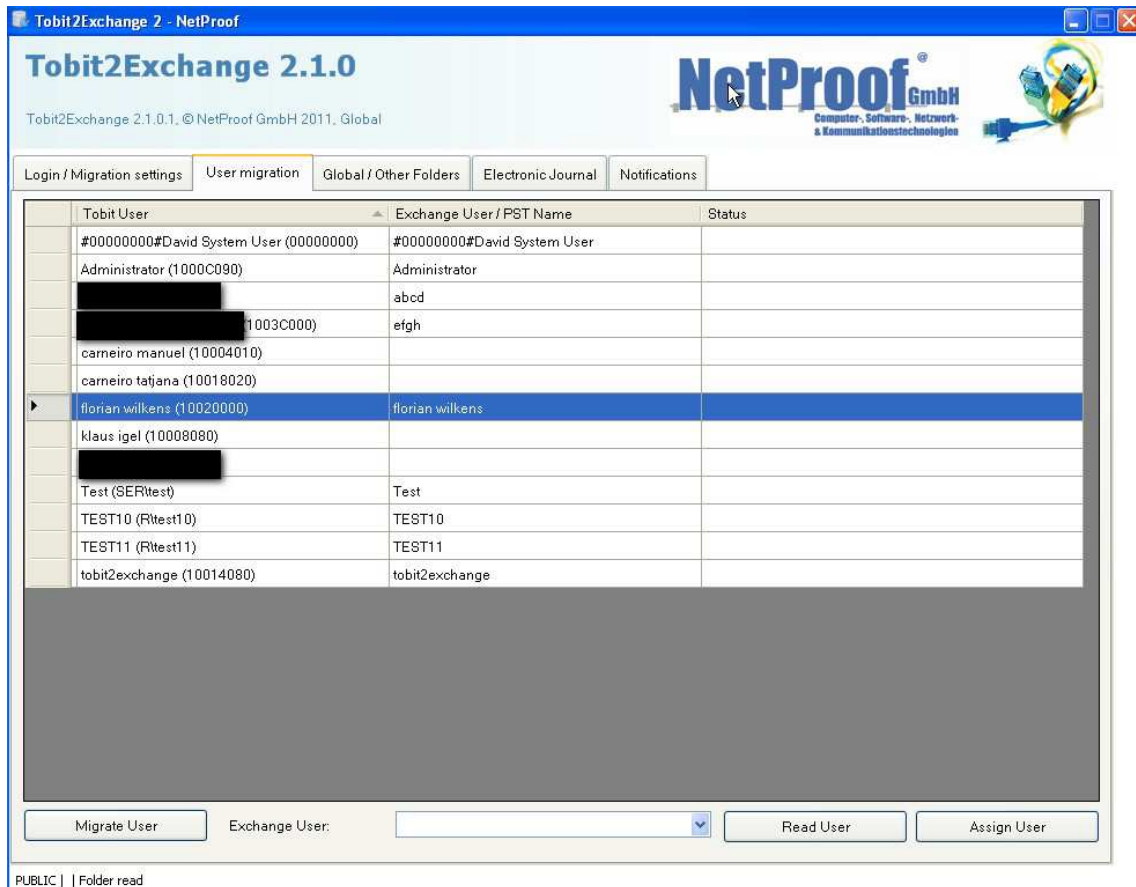
Special mode to simulate a migration process without writing any data to Outlook / Exchange. This mode is suitable to test whether your source and target environment is ready to be used. Any warnings/errors can be found in the log.

Tobit2Exchange Manual - Version 2.x

5.2 Tobit Server login

The first step in the migration process is to log into the source system (Tobit Server). Therefore you have to enter the user name, password, and server name.

After a successful login you'll see all Tobit users in the "user assignment table".



The screenshot displays the Tobit2Exchange 2.1.0 application window. The interface includes a title bar, a header with the product name and logo, and a navigation menu. The main area features a table with the following columns: Tobit User, Exchange User / PST Name, and Status. The table lists various users, with 'florian wilkens (10020000)' selected. Below the table, there are buttons for 'Migrate User', 'Exchange User', 'Read User', and 'Assign User'. The status bar at the bottom indicates 'PUBLIC | Folder read'.

Tobit User	Exchange User / PST Name	Status
#00000000#David System User (00000000)	#00000000#David System User	
Administrator (1000C090)	Administrator	
[REDACTED]	abcd	
[REDACTED] (1003C000)	efgh	
carneiro manuel (10004010)		
carneiro tatjana (10018020)		
florian wilkens (10020000)	florian wilkens	
klaus igel (10008080)		
[REDACTED]		
Test (SERtest)	Test	
TEST10 (Rtest10)	TEST10	
TEST11 (Rtest11)	TEST11	
tobit2exchange (10014080)	tobit2exchange	

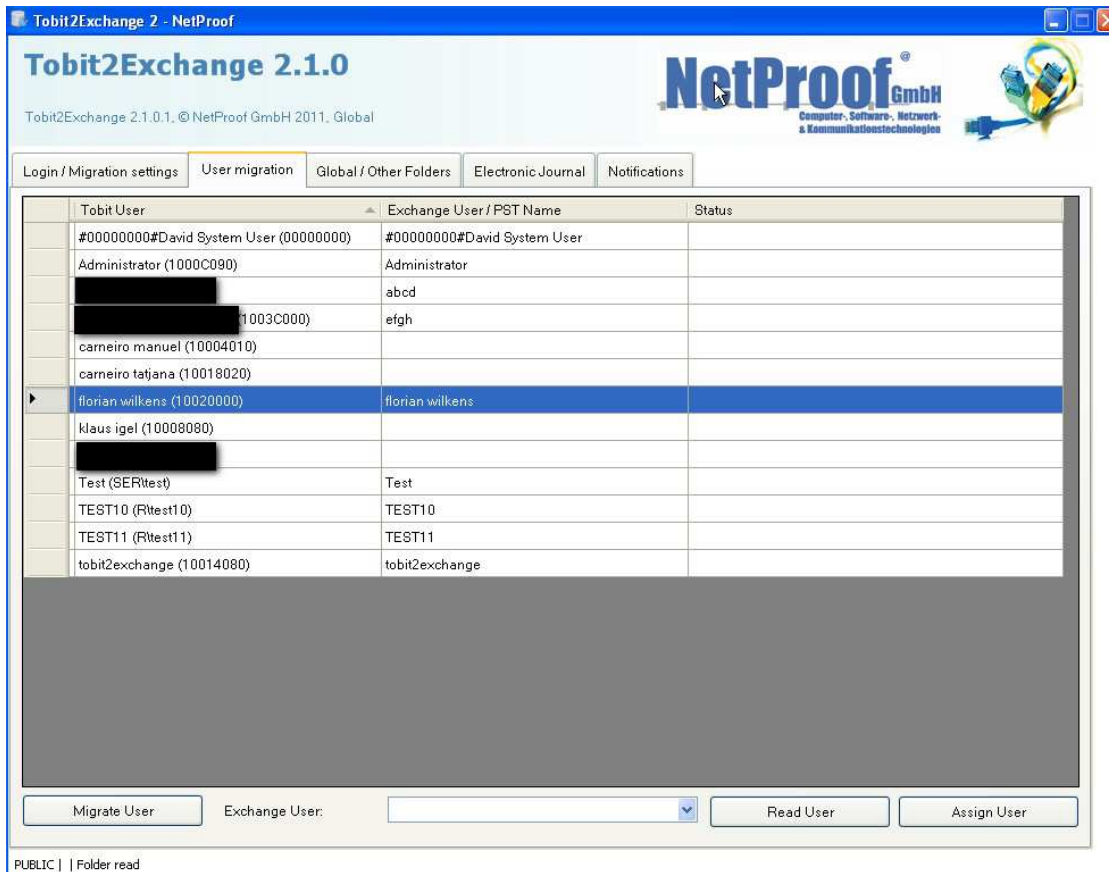
5.3 Outlook / Exchange login

The next step is to establish a MAPI session by performing a login for Outlook (specify the PST file) or Exchange (specify the user/server). After a successful login you can start the migration.

Tobit2Exchange Manual - Version 2.x

5.4 Setting the users mapping

By selecting users you specify which users will be migrated.



The screenshot shows the 'User migration' tab in the Tobit2Exchange 2.1.0 application. The table below lists the mapping between Tobit users and Exchange users. The 'florian wilkens' user is currently selected.

Tobit User	Exchange User / PST Name	Status
#00000000#David System User (00000000)	#00000000#David System User	
Administrator (1000C090)	Administrator	
[REDACTED]	abcd	
[REDACTED] (1003C000)	efgh	
carneiro manuel (10004010)		
carneiro tatjana (10018020)		
florian wilkens (10020000)	florian wilkens	
klaus igel (10008080)		
[REDACTED]		
Test (SERtest)	Test	
TEST10 (Rtest10)	TEST10	
TEST11 (Rtest11)	TEST11	
tobit2exchange (10014080)	tobit2exchange	

At the bottom of the window, there are four buttons: 'Migrate User', 'Exchange User', 'Read User', and 'Assign User'. The 'Exchange User' button is currently active, and a dropdown menu is visible below it. The status bar at the bottom left indicates 'PUBLIC | Folder read'.

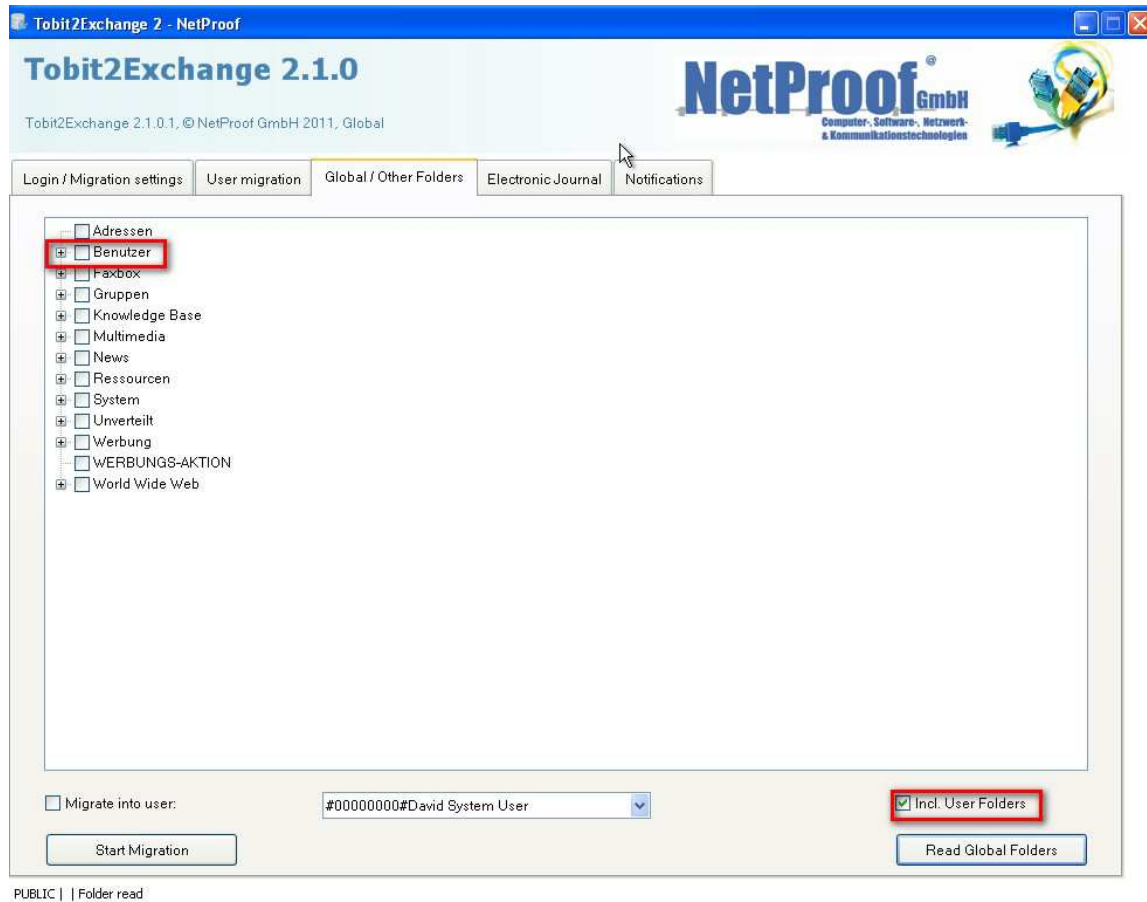
If the user naming scheme is different within Tobit or Exchange, you have to specify the target name for the Tobit user. You can define these settings in the column "Exchange User / PST name".

The button "Read User" fills the "Exchange User"- combo box with all available users from the Exchange side. The button "Assign user" sets a default target user for all rows that have no matching name assignment.

Tobit2Exchange Manual - Version 2.x

5.5 How to migrate global folders

The tab “migrating global/other folders” shows the following screen, which allows you to migrate all “non user/public” folders. Please keep in mind that this feature isn’t available in all Tobit2Exchange versions.



If you have selected the checkbox “incl. user folders” you’ll see all folders within this tree view. While the standard user migration transfers “everything” from the selected user, this option allows you a fine grained migration by selecting folders in the tree view.

Migrate into user

By enabling this feature you can transfer public folders into a user mailbox instead of the Exchange public folder structure.

Tobit2Exchange Manual - Version 2.x

5.6 Electronic journal

The electronic journal provides a comprehensive view of all program activities, warnings, errors and summaries.

Datum/Date	Benutzer/User	Eintrag/Entry	Typ
06.01.2012 15:54:21		Tobit2Exchange 2.1.0.1, © NetProof GmbH 2011	I
06.01.2012 15:54:21		Tobit init	I
06.01.2012 15:54:21		Load DVAPI	I
06.01.2012 15:54:21		DVAPI loaded	I
06.01.2012 15:54:21		Tobit initied	I
06.01.2012 15:54:21		Mapi init	I
06.01.2012 15:54:21		Load Mapi Session	I
06.01.2012 15:54:21		Mapi Session loaded	I
06.01.2012 15:54:21		Data Encryption: True	I
06.01.2012 15:54:22		Load Mapi Utils	I
06.01.2012 15:54:22		Mapi Utils loaded	I
06.01.2012 15:54:22		Mapi initied	I
06.01.2012 15:54:22		Tobit2Exchange 2.1.0.1 gestartet	I
06.01.2012 15:54:22		Tobit version: DvISE API 10.00a 219	I
06.01.2012 15:54:22		Outlook version: 11.0.5510.0 - 5.2.0.2486	I
06.01.2012 15:54:22		Operating system: Microsoft Windows NT 5.1.2600 Service Pack 3	I
06.01.2012 15:54:22		Culture: de-DE, UI: de-DE	I
06.01.2012 15:54:22		Attachment Path: C:\Dokumente und Einstellungen\fwilkens\Lokale Einstellungen\Temp\	I

You can change the sort sequence by clicking on the column heading. The filter criterias allow you to search for specific entries.

6. Additional Information

6.1 *Contact*

NetProof GmbH
Computer-, Software-, Netzwerk- und Kommunikationstechnologien
Hoopter Elbdeich 75
21423 Winsen (Luhe)

Technik & Lieferanschrift
Luhdorfer Straße 60
21423 Winsen (Luhe)

eMail: tobit2exchange@netproof.de
Internet: www.netproof.de

Phone +49 4171 64 39 2
Fax +49 4171 65 35 40

6.2 *Rechtliche Hinweise*

Haftungsausschluss

Die NetProof GmbH übernimmt keinerlei Gewähr für die Aktualität, Korrektheit, Vollständigkeit oder Qualität der bereitgestellten Informationen.

Haftungsansprüche gegen die NetProof GmbH, welche sich auf Schäden materieller oder ideeller Art beziehen, die durch die Nutzung oder Nichtnutzung der dargebotenen Informationen bzw. durch die Nutzung fehlerhafter und unvollständiger Informationen verursacht wurden, sind grundsätzlich ausgeschlossen, sofern seitens der NetProof GmbH kein nachweislich vorsätzliches oder grob fahrlässiges Verschulden vorliegt.

Alle Angebote sind freibleibend und unverbindlich. Die NetProof GmbH behält es sich ausdrücklich vor, Teile der Seiten oder das gesamte Angebot ohne gesonderte Ankündigung zu verändern, zu ergänzen, zu löschen oder die Veröffentlichung zeitweise oder endgültig einzustellen.

6.3 *Markennamen*

Die in diesem Dokument verwendeten Marken- und Produktnamen werden ausschließlich zur Beschreibung genannt.

Microsoft®, Exchange®, Office®, Outlook®, Windows® sind eingetragene Markenzeichen der Microsoft Corporation.

Tobit®, David® sowie Tobit Info Center® sind eingetragene Markenzeichen der Tobit AG.

Novell®, Netware® sind eingetragene Markenzeichen der Novell, Inc.