



# Tobit2Exchange 2

Fast, easy and reliable data transfer from  
Tobit<sup>®</sup> Server into Microsoft Exchange<sup>®</sup> /  
Microsoft Outlook<sup>®</sup>



### Objectives

- Fast, easy and reliable data transfer from Tobit® Server into various target formats
- Migration data is highly customizable
- Supports single user and batch mode migration. Manual steps are reduced to a minimum.
- Applicable for the migration of single Tobit® Server as well as for IT companies, who migrate Tobit® data many times
- No time limit for the program usage
- Extensive logging of the migration activities. Therefore it's possible to review the migration at a later date
- Supports also older Tobit® versions (since version 6.6)



### Why to choose Tobit2Exchange

- Has established itself in more than 2,000 migrations as a reliable tool
- Professional support – also on weekends
- NetProof has qualified know-how in all relevant areas
  - David®
  - Exchange®
  - Software development
- In the test laboratory all available David ® versions and target formats are available, so that almost all situations can be quickly traced



# Systemanforderungen

- David® / Faxware® Server:
  - 6.6 SP 5a
  - Home
  - SL
  - XL
  - V8 / V8+
  - V10
  - fx
- Target formats:
  - MS Exchange® Server 2003 / 2007 / 2010 / 2013
  - MS Outlook® PST Files
  - Office 365
- Operating systems:
  - MS Windows® XP professional
  - MS Windows® Vista
  - MS Windows® 7 / 8
- Microsoft .NET Framework®



### Installation

- Check the system requirements
  - Outlook® has to be the standard mail program
  - Tobit® InfoCenter® ist installed on the workstation
- Running „Setup.exe“ on the workstation
  - Installation of the Tobit2Exchange program components
  - Automatic creation of the log database
  - Optional: Update / Installation .NET Frameworks
- Check the user permissions for the David® Server and the selected target format



## Functional scope

- Migrated elements:
  - Calendar items
  - Messages
    - Mails
    - Faxes
    - SMS
    - Voice Mails
  - Tasks
  - Contacts
  - Global folders
- Transfers the whole folder structure into the target format
- File attachments are migrated as well

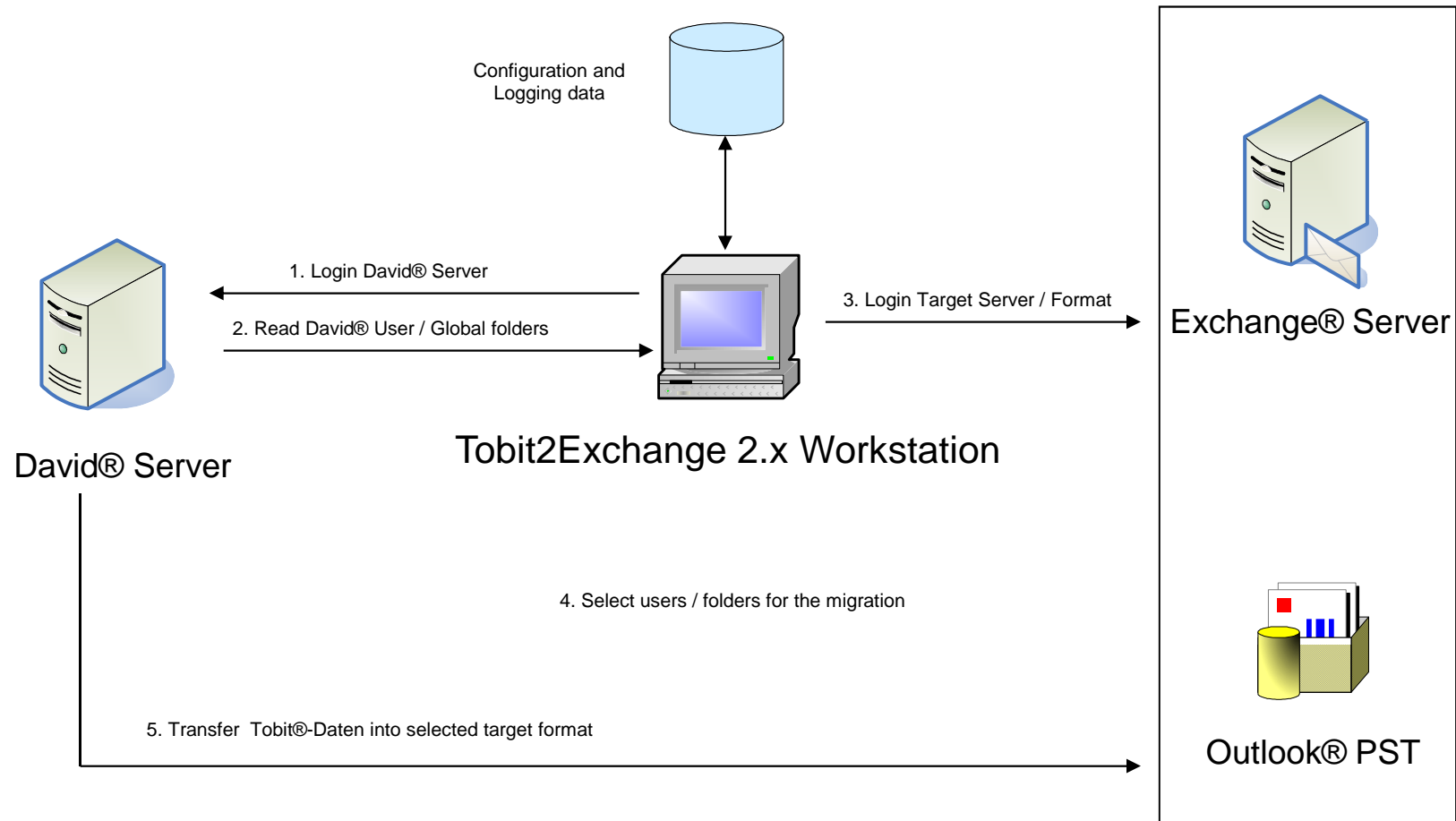


## The main changes in version 2.0

- Support for Microsoft Exchange® 2013 / Office 365 ®
- Global folders can be migrated into a PST files, an Exchange® user or directly into 'All Public Folders'
- Exchange® users can be automatically determined and assigned to David®/Tobit® mailboxes
- Mail profiles can be automatically determined and created
- New post-processing mode for individual treatment of "problematic" David ® Folders
- Increased performance and improved error handling
- No annoying security dialogs when accessing Outlook® / Exchange® Data
- New namespace avoids conflicts with existing data in mailboxes



## Migration workflow





## Tobit2Exchange 2



## Example: Startup / Login process

The screenshot shows the Tobit2Exchange 2.0 application window. The title bar reads "Tobit2Exchange 2 - NetProof". The main window has a header with the NetProof logo and the text "Tobit2Exchange 2.0" and "Tobit2Exchange 2.0.0.0, Copyright © NetProof GmbH 2010". Below the header are four tabs: "Login / Migration settings" (selected), "User migration", "Global / Other Folders", and "Electronic Journal".

The "Login / Migration settings" tab is divided into two main sections:

- David Login: DvMSE API 8.50a.217**
  - User:
  - Password:
  - Server:
  -
- Login - Exchange / Outlook Mapi**
  - Outlook  Exchange
  - Mail Profile:
  -

Below these sections is the **Migration settings** area, which includes several checkboxes and input fields:

- Calendar entries
- Calendar attachments
- Personal Contacts
- Address Categories
- Tasks
- Task attachments
- Mails / Faxes / SMS
- Mail attachments
- Drafts
- System folders
- Reminders
- Delete Outlook / Exchange data
- Complete Log
- Mark all messages as read
- Create new PST File
- Path for PST Files:
- Start date:  until:

At the bottom left of the window, it says "Application ready".

- Login David® Server
- Select the Outlook® Mailprofiles or login directly into the Exchange® Server
- Specify the settings for the migration- and logging
- For a migration into automatically generated PST files you can specify the target folder for these files

# Tobit2Exchange 2



## Example: User migration

Tobit User	Exchange User / PST Name	Status
#00000000#DvISE System User (000...	#00000000#DvISE System User	
Administrator (10004000)	Administrator	
gw (USER\gw)	gw	
terminegw (rchivegw)	terminegw	
Testuser Kalender (5A010001)	Testuser Kalender	
Testuser Mail 1 (678D0000)	Testuser Mail 1	Succeeded
Testuser Mail 2 (10150000)	Testuser Mail 2	Succeeded
Testuser Mail 3 (10050000)	Testuser Mail 3	Succeeded
Testuser OSE (10064010)	Testuser OSE	
Testuser Peter SEN (10030000)	Testuser Peter SEN	
Testuser Schweiz (6c030023)	Testuser Schweiz	
Testuser Voice Mail (100080D0)	Testuser Voice Mail	
Testuser VVI TT (10034000)	Testuser VVI TT	
usrMigration (10009000)	usrMigration	

Migrate User

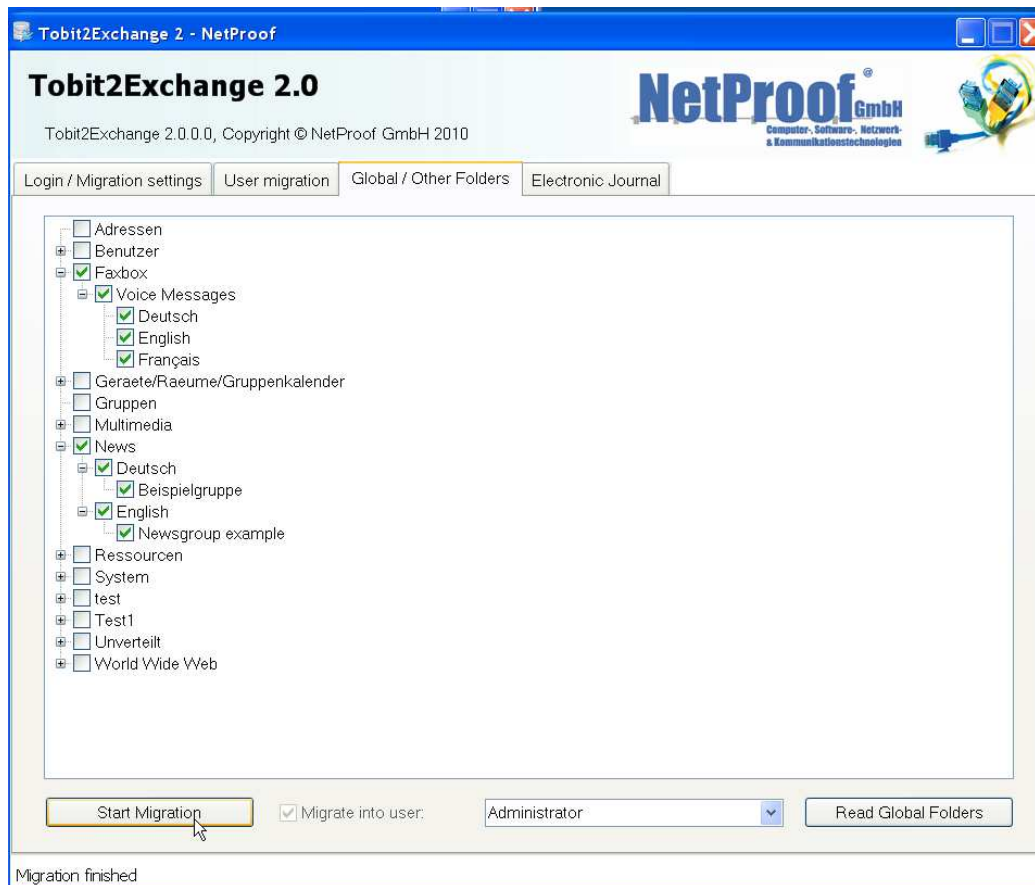
Migration finished

- Select the David® user for the migration
- Specify the PST file names when working in the Outlook® Mode or the user name for the Exchange® mode
- Start the migration process
- Outlook Mode: For all selected users will be appropriate PST files created in the previously prescribed directory
- Exchange Mode: Users will be migrated directly into the corresponding Exchange® mailboxes

## Tobit2Exchange 2



### Example: Migrate global folders



- Read the David® folder structure
- Select the folders that should be migrated
- Specify the target type:
  - PST
  - Exchange User
  - All Public Folders
- Start the migration

# Tobit2Exchange 2



## Example: Electronic Journal

Tobit2Exchange 2.0  
Tobit2Exchange 2.0.0.0, Copyright © NetProof GmbH 2010

NetProof GmbH  
Computer, Software, Netzwerk & Kommunikationstechnologien

Login / Migration settings | User migration | Global / Other Folders | **Electronic Journal**

Datum/Date	Benutzer/User	Eintrag/Entry	Typ
23.02.2010 17:17:02	usrMigration (10008000)	Folder migration in progress: Kalender	
23.02.2010 17:17:03	usrMigration (10008000)	Transferred items: 2	
23.02.2010 17:17:03	usrMigration (10008000)	Folder Holidays will be ignored	
23.02.2010 17:17:03	usrMigration (10008000)	System folder ignored!	
23.02.2010 17:17:03	usrMigration (10008000)	Folder migration in progress: Textbausteine	
23.02.2010 17:17:03	usrMigration (10008000)	Transferred items: 0	
23.02.2010 17:17:03	usrMigration (10008000)	Folder migration in progress: Verknüpfungen	
23.02.2010 17:17:03	usrMigration (10008000)	Transferred items: 0	
23.02.2010 17:17:03	usrMigration (10008000)	Folder migration in progress: Adressen	
23.02.2010 17:17:03	usrMigration (10008000)	Transferred items: 0	
23.02.2010 17:17:03	usrMigration (10008000)	Folder migration in progress: Favoriten	
23.02.2010 17:17:03	usrMigration (10008000)	Transferred items: 0	
23.02.2010 17:17:03	usrMigration (10008000)	Folder migration in progress: Aufgaben	
23.02.2010 17:17:03	usrMigration (10008000)	Transferred items: 1	
23.02.2010 17:17:03	usrMigration (10008000)	Reminders ignored!	
23.02.2010 17:17:03	usrMigration (10008000)	Folder migration in progress: Ausgang	
23.02.2010 17:17:04	usrMigration (10008000)	Transferred items: 0	
23.02.2010 17:17:04	usrMigration (10008000)	Folder migration in progress: Eingang	
23.02.2010 17:20:51	usrMigration (10008000)	Transferred items: 45	
23.02.2010 17:20:51	usrMigration (10008000)	Empty recycle bin	
23.02.2010 17:20:51	usrMigration (10008000)	Close PST: usrMigration	
23.02.2010 17:20:52	usrMigration (10008000)	Migration finished	

Journal löschen

Migration finished



## Additional Information / Demoverision

If interested, we will send you a free demo version. Please tell us the MAC address of the workstation where you want to test Tobit2Exchange.

Further information is also available at <http://www.tobit2exchange.de>

### Contact:

NetProof GmbH  
Luhdorferstr. 60  
21423 Winsen / Luhe

Tel: +49 4171/64392  
Fax: +49 4171/653540  
E-Mail: [tobit2exchange@netproof.de](mailto:tobit2exchange@netproof.de)

<http://www.netproof.de>  
<http://www.tobit2exchange.de>